

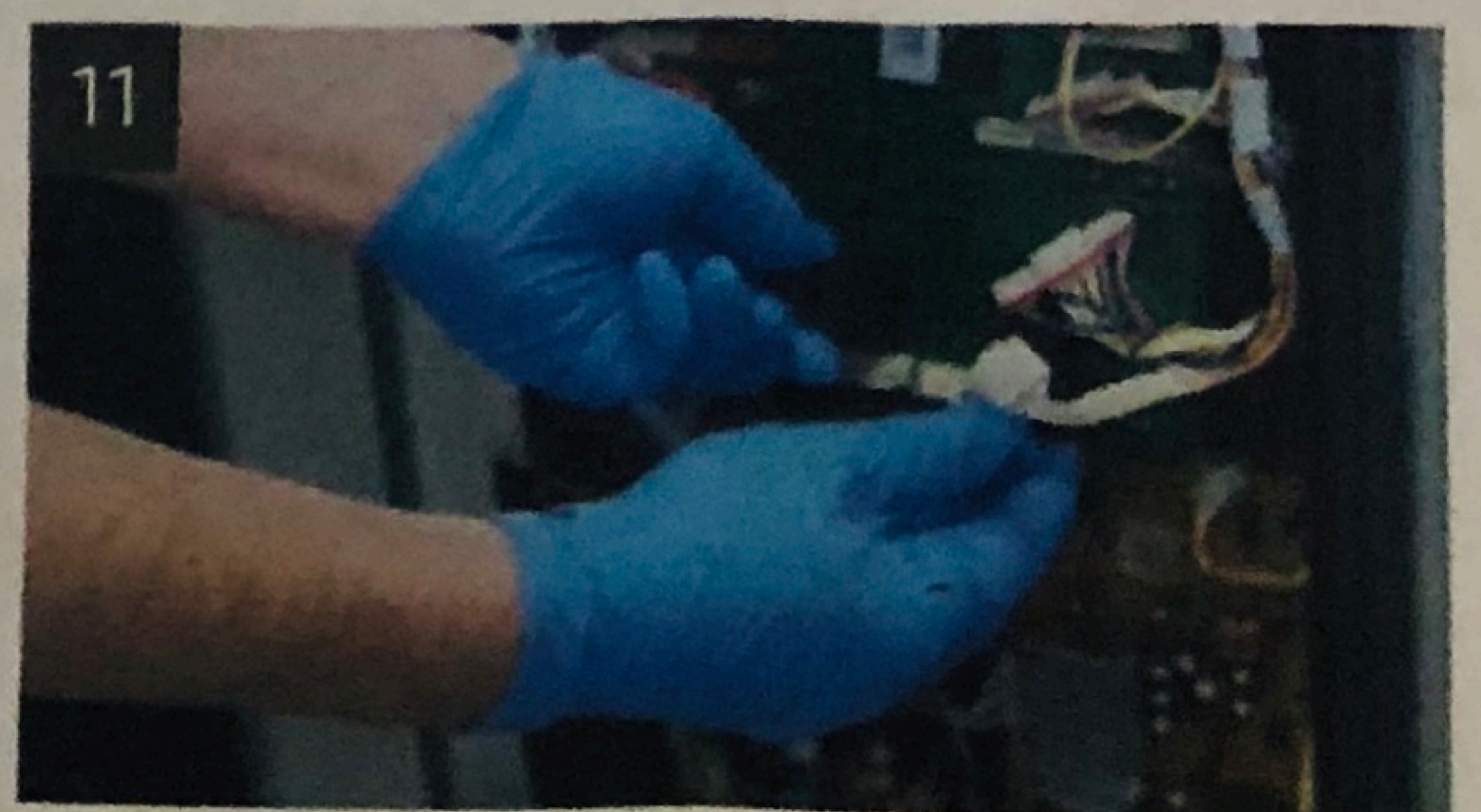
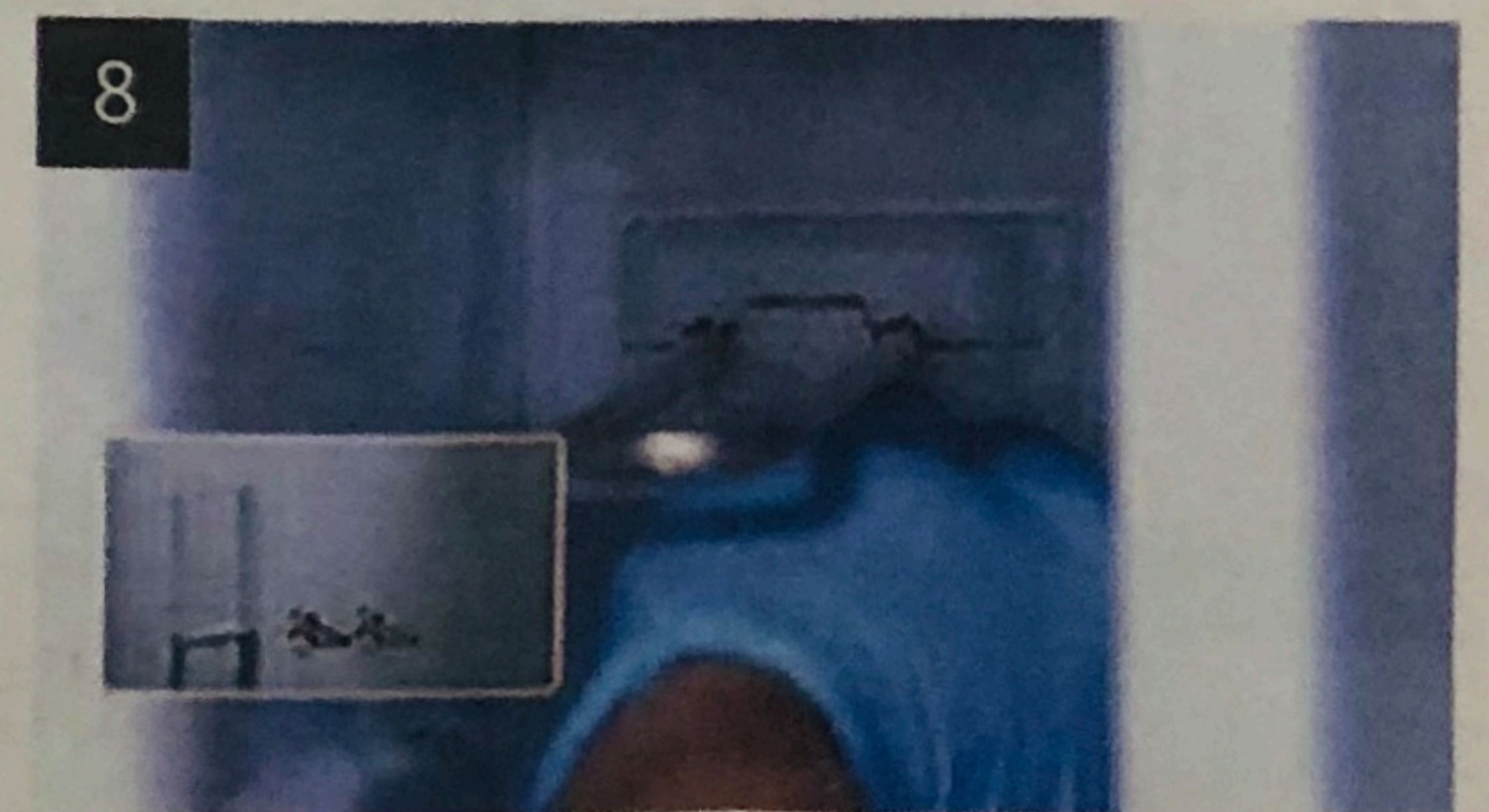
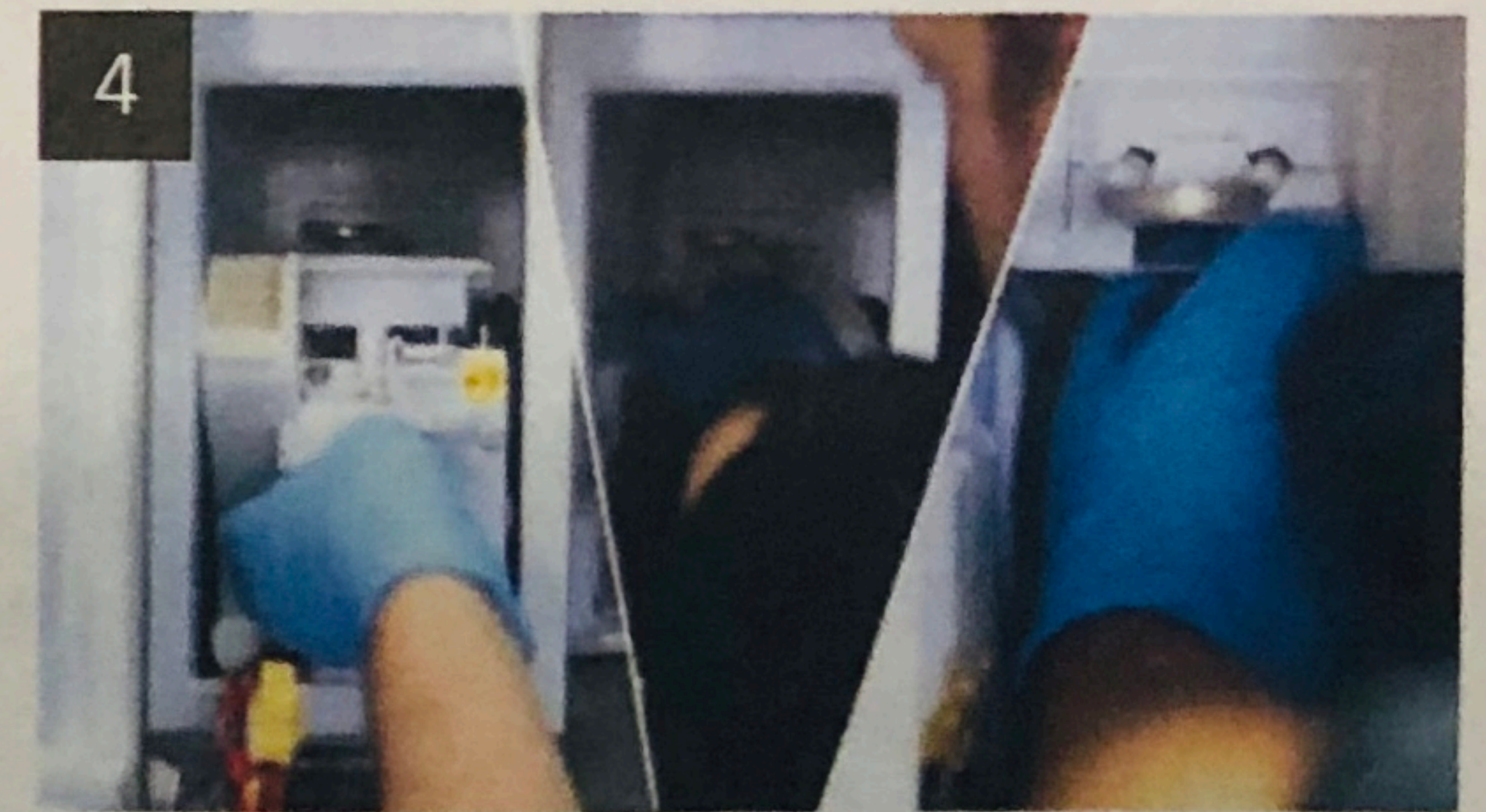
# Frozen Ice Room Quick Guide

Quick Guide for the Ice Room service kit that addresses Ice Room frosting/ frozen condition.

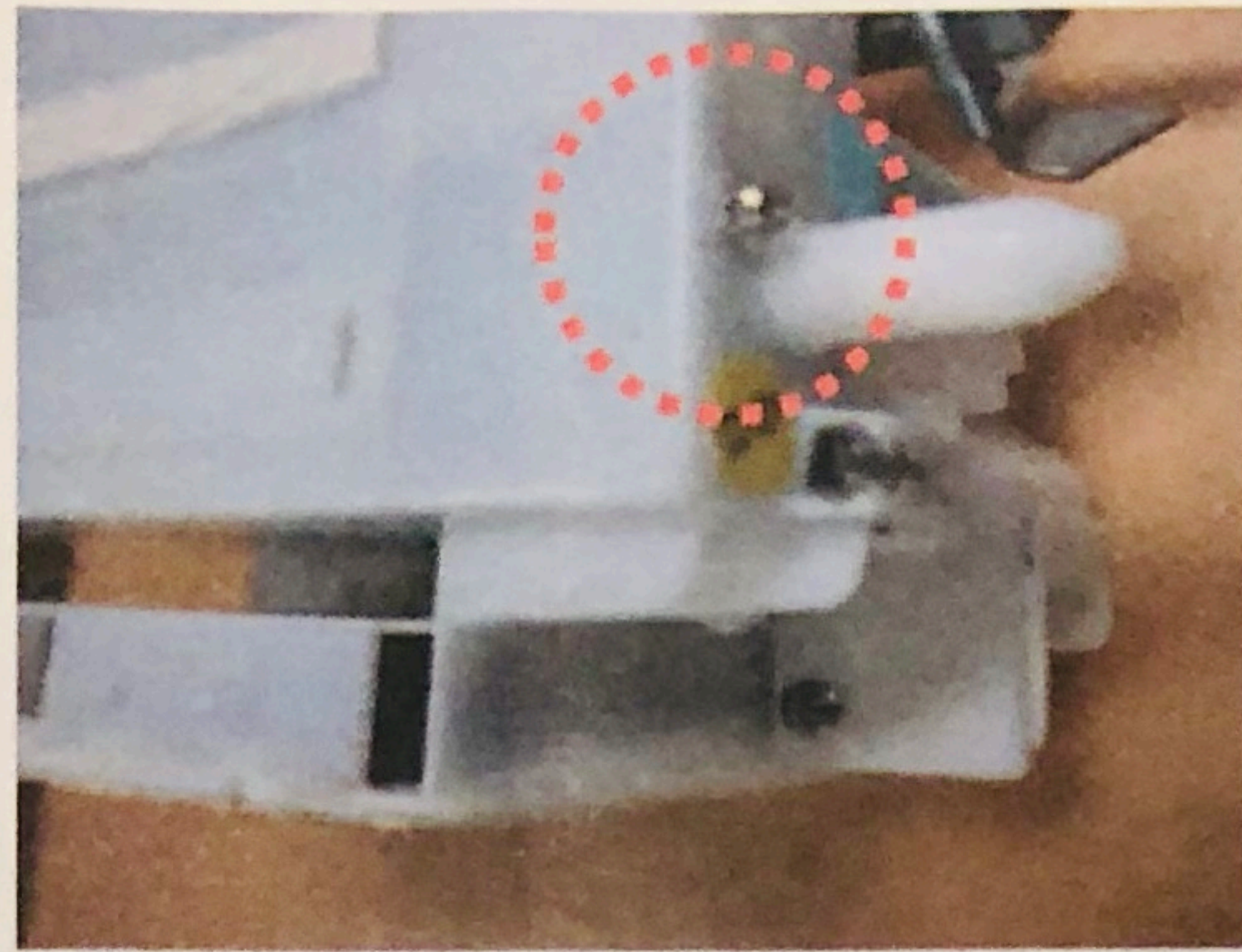


Scan this QR Code  
to watch our video

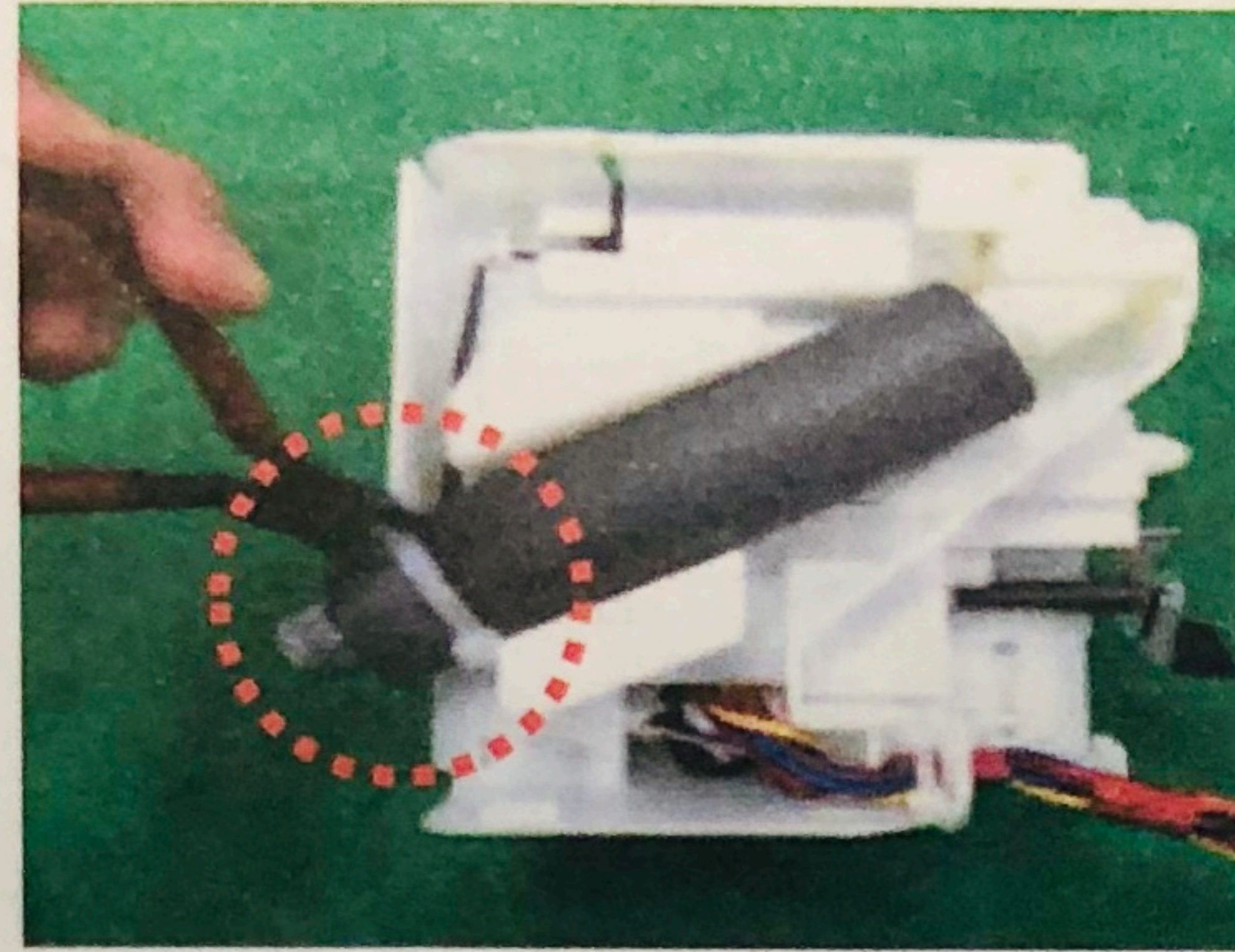
1. Defrost the Ice Room using a steamer. Do not use a heat gun or hair dryer which will damage the unit. Do not rely on unplugging unit to completely thaw the Ice Room. This is not effective.
2. Unplug the unit so that the Cooling Loop defrosts completely.
3. Remove the Ice Bucket, and then remove the Molex Cover.
4. Remove the Ice Maker, Auger Assembly, and Cooling Loop Retainer, and then physically confirm that all ice has been removed from the Ice Room.
5. Towel dry all surfaces in the Ice Room completely.
6. Inspect the drain area for obstructions. Clear if necessary.
7. Inspect the fill area for obstructions or improper water line location. Adjust if necessary.
8. Install the new Cooling Loop Retainer and Y Clip.
9. Remove the Auger Drain from the Auger assembly, and then install the new upgraded drain piece. Reassemble, and then wire tie the Drain Hose in place so that it matches the original build. (See next page.)
10. Re-install the Auger Assembly, and then install the new Icemaker.
11. Make sure the unit is unplugged, and then remove and replace the Main PCB.
12. Restore power to the unit, and then run the Icemaker self test. Inspect for leaks.
13. Re-Install the Molex Cover, and then re-install the Ice Bucket.



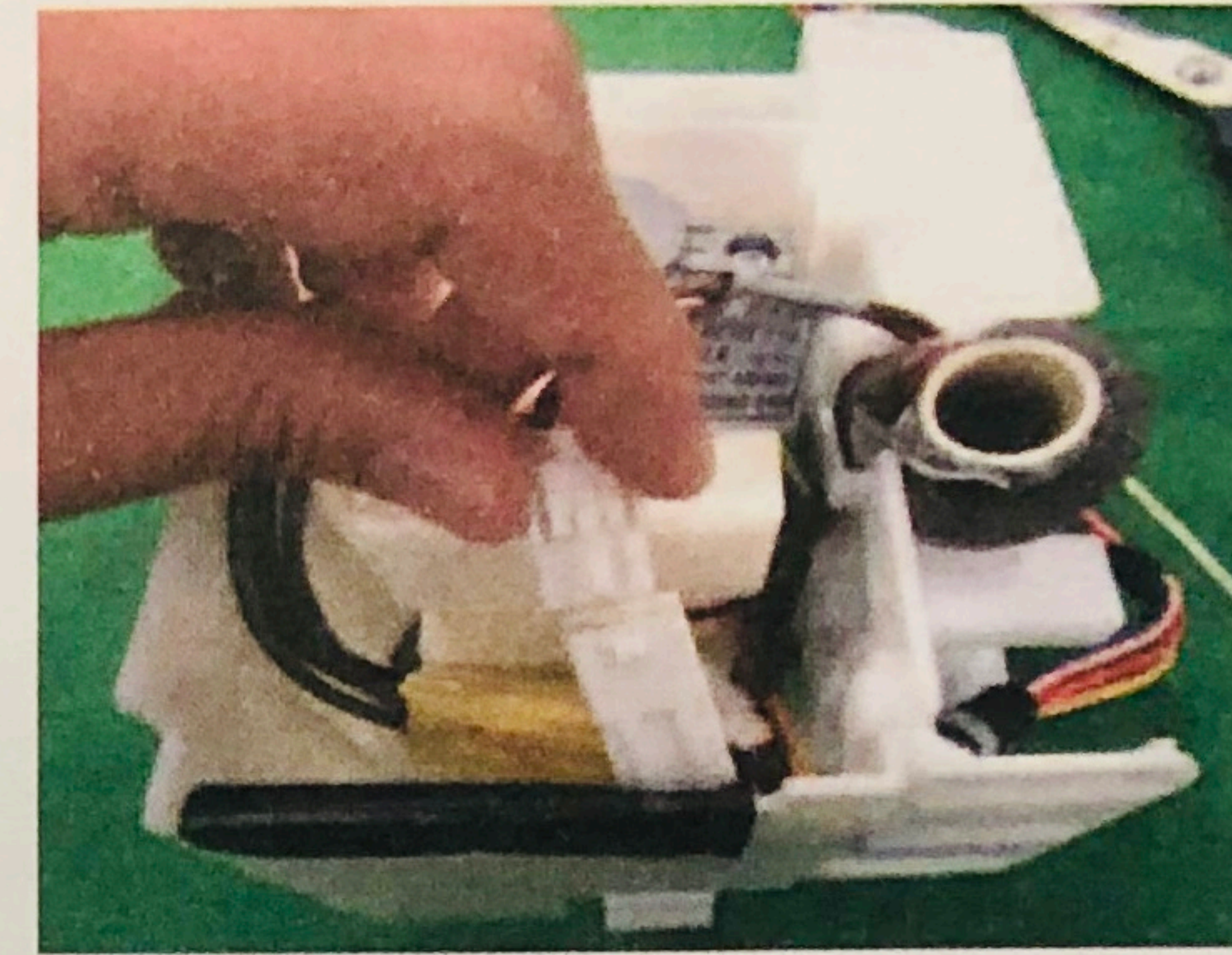
# Installing the New Drain Piece



1. Remove screw beside the drain hose.



2. Cut and remove cable tie.



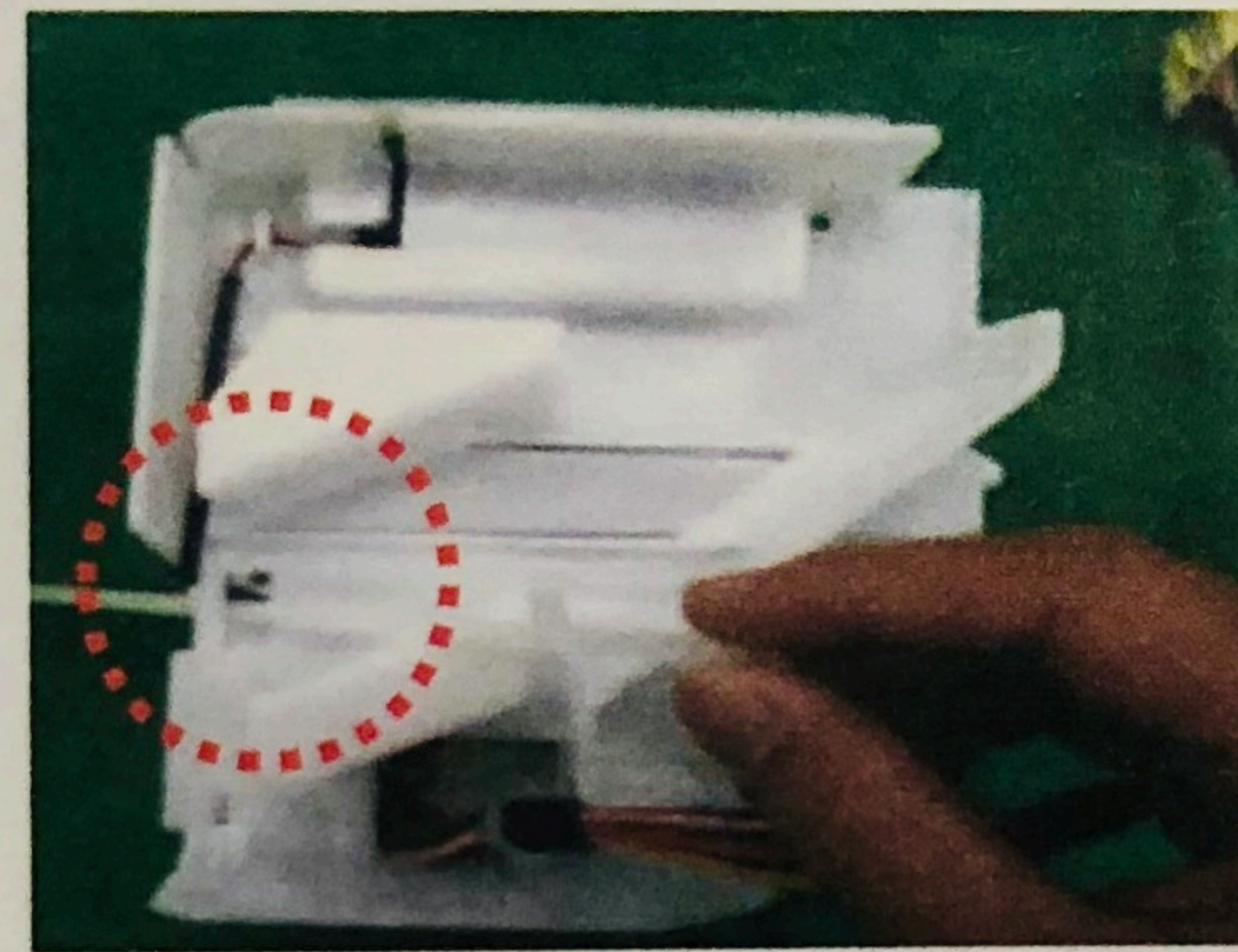
3. Disconnect the wire.



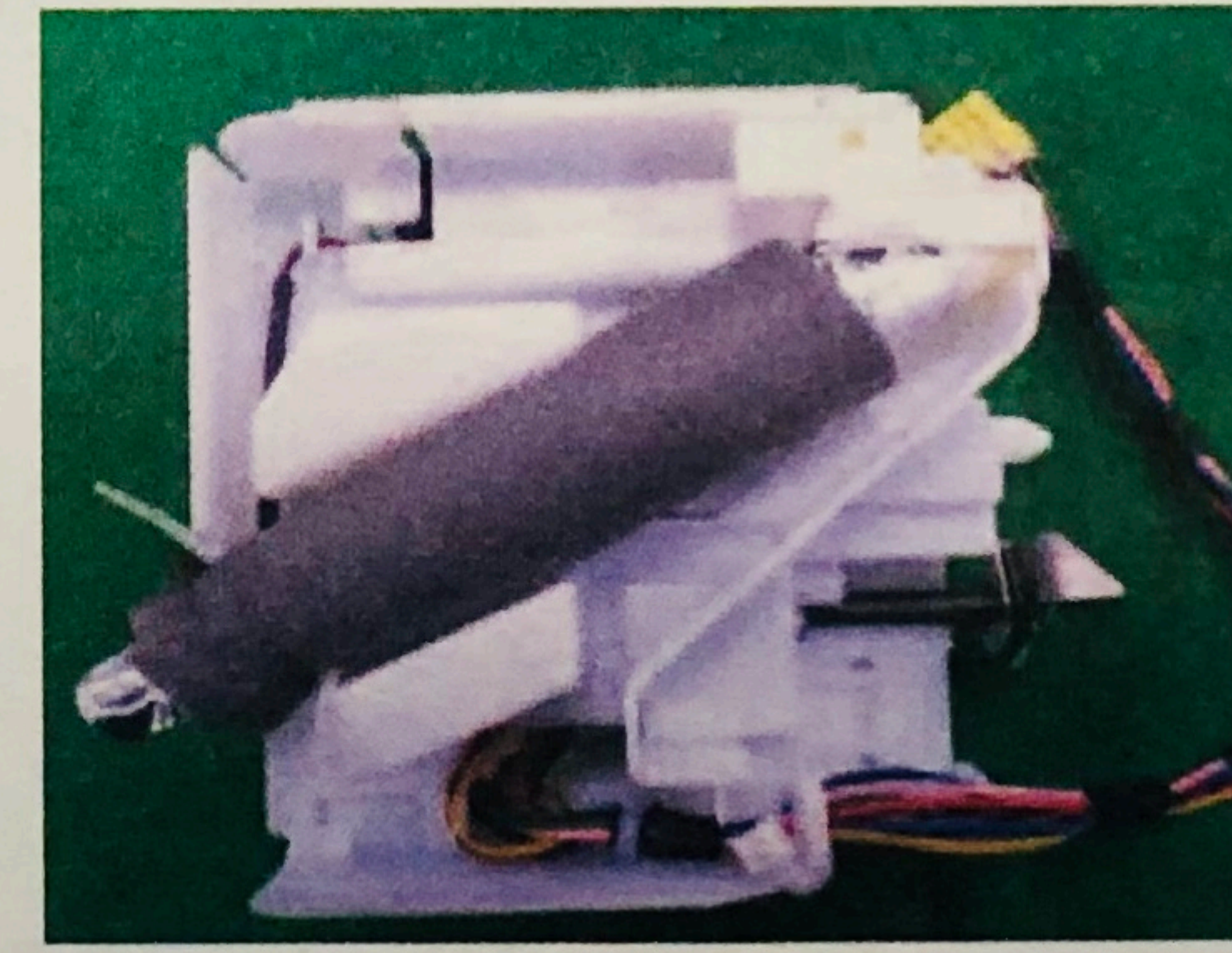
4. Remove the wire from the Auger Motor. Remove the drain hose.



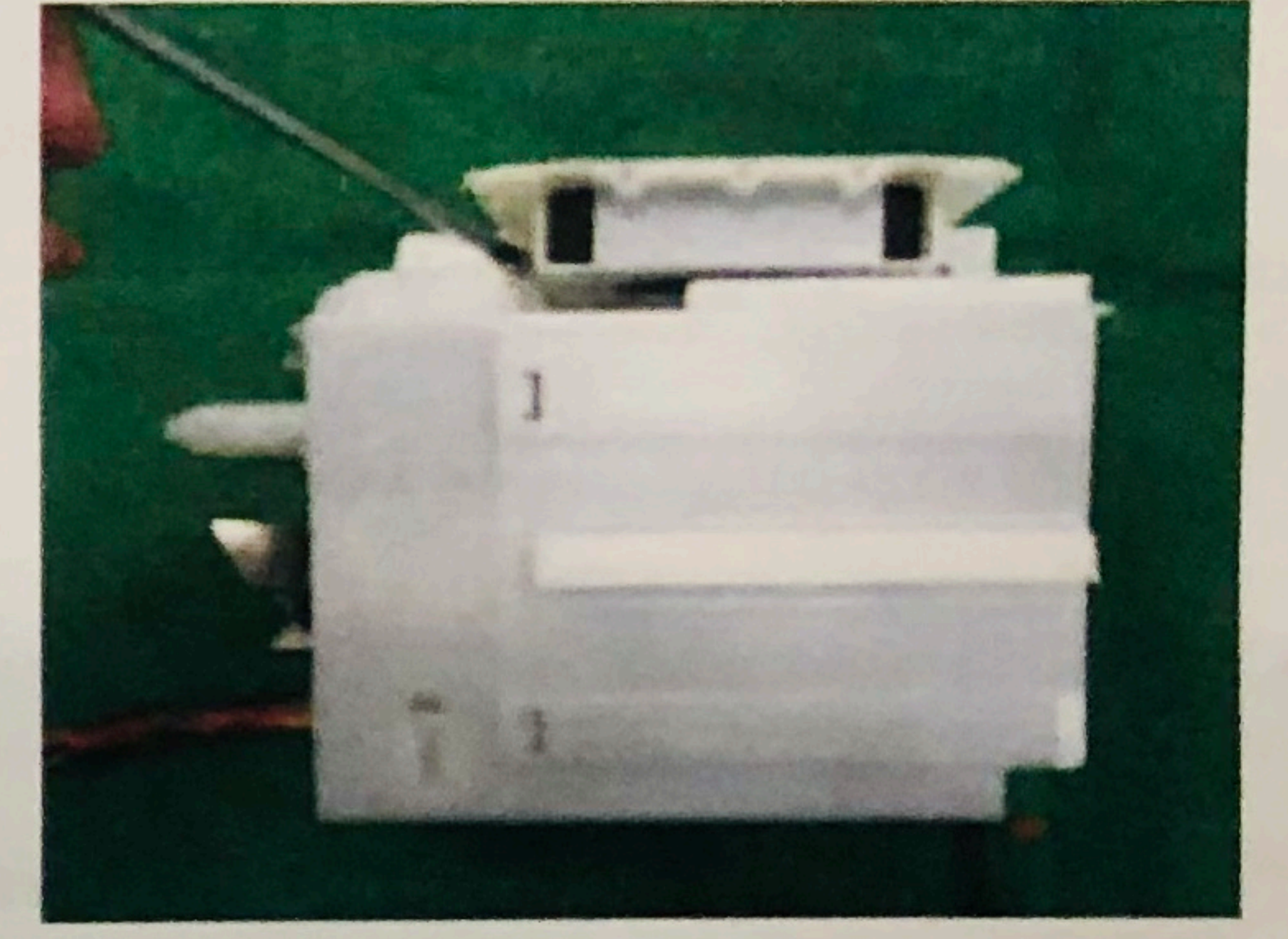
5. Check improved part :  
- Heater to the top  
- Changed Drain Hole shape



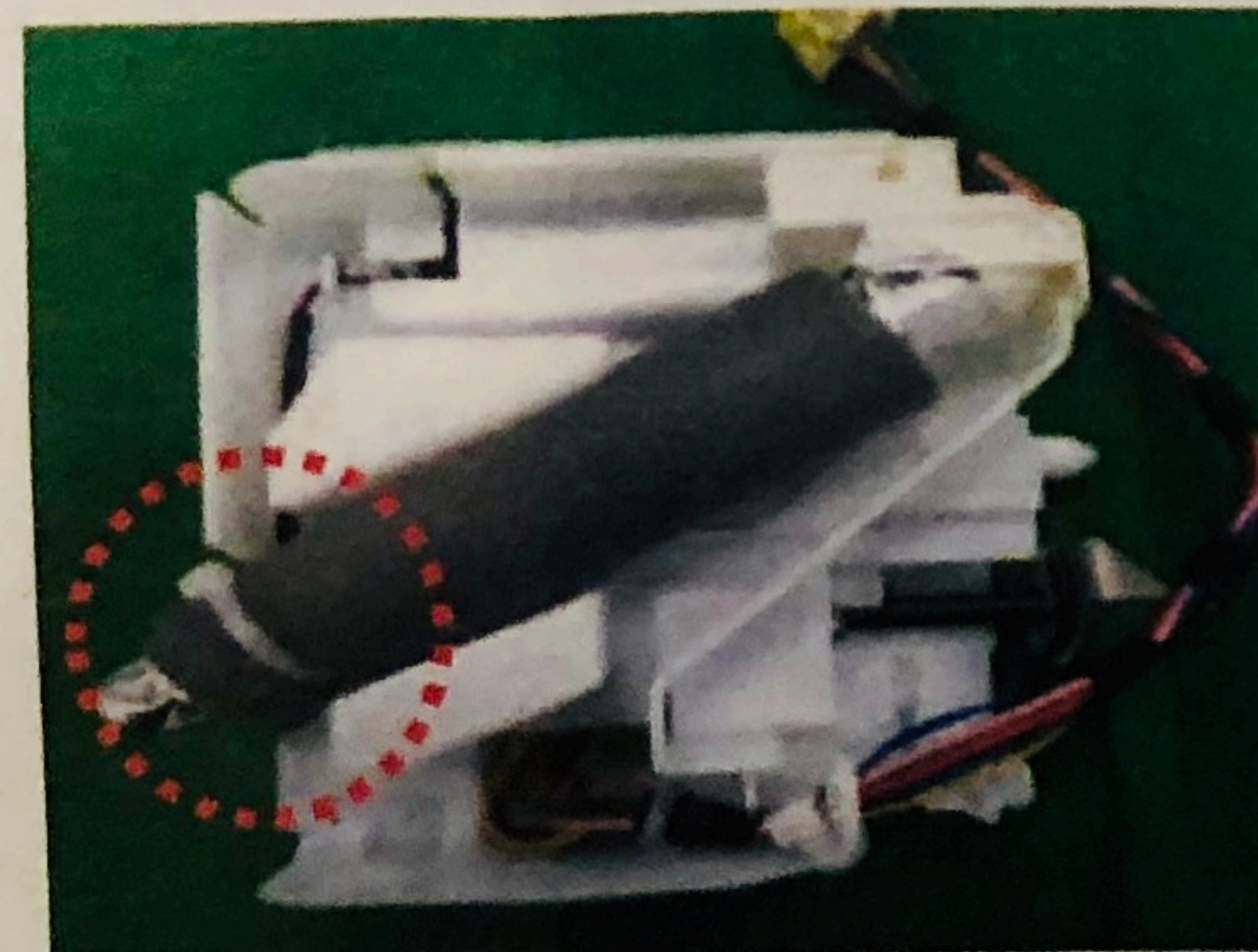
6. Insert a cable tie into the hole.



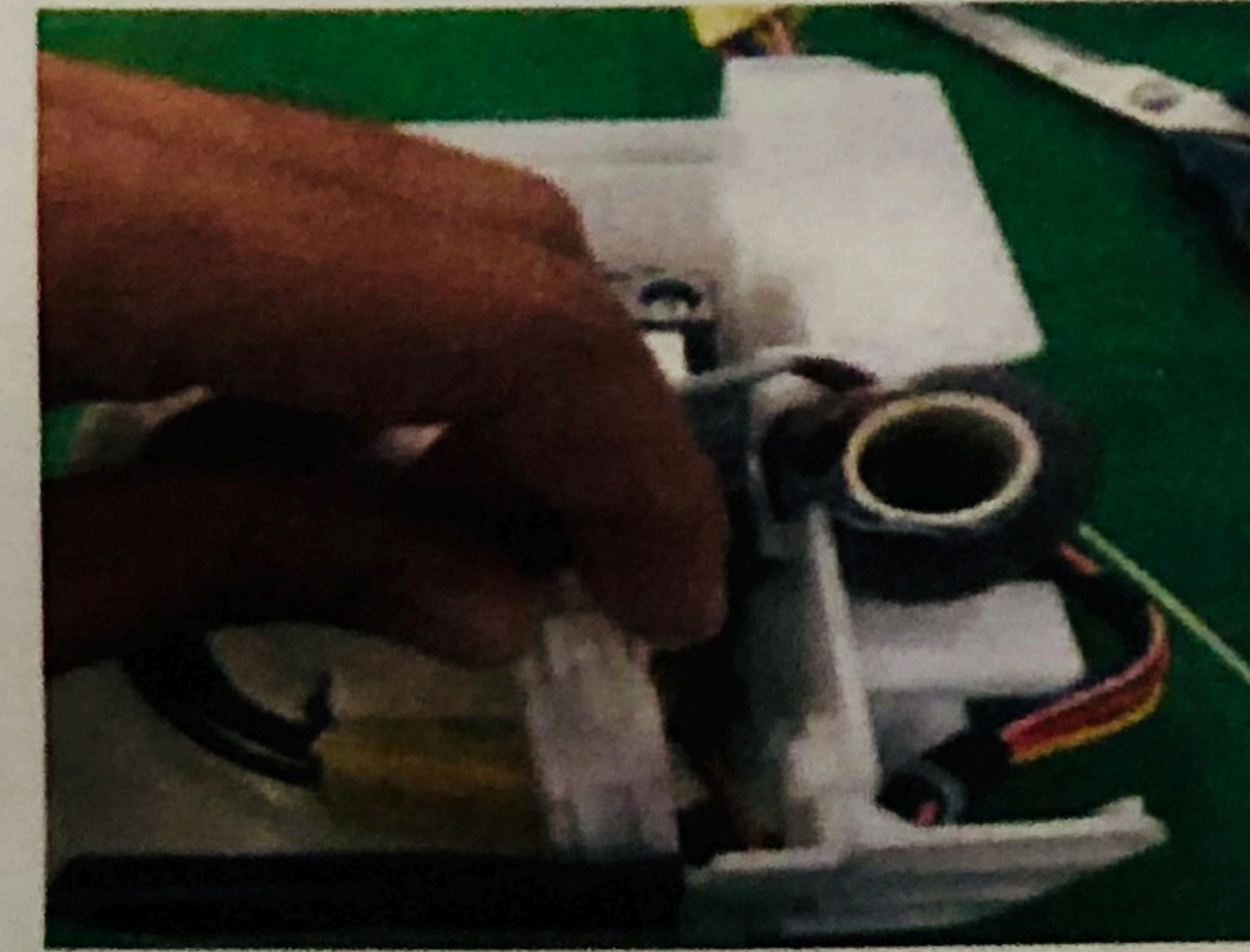
7. Re-insert the Drain Hose.



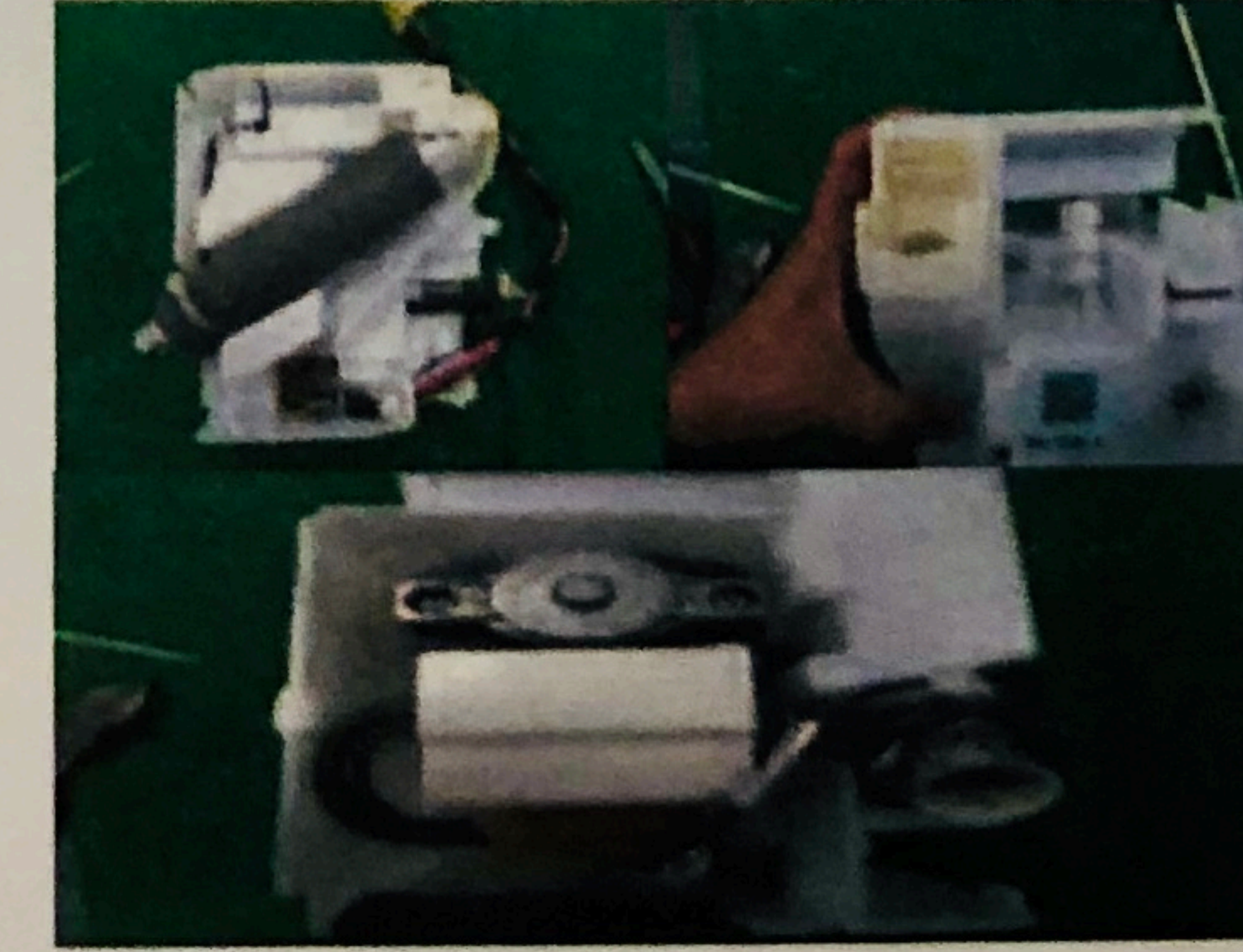
8. Re-insert the screw and tighten.



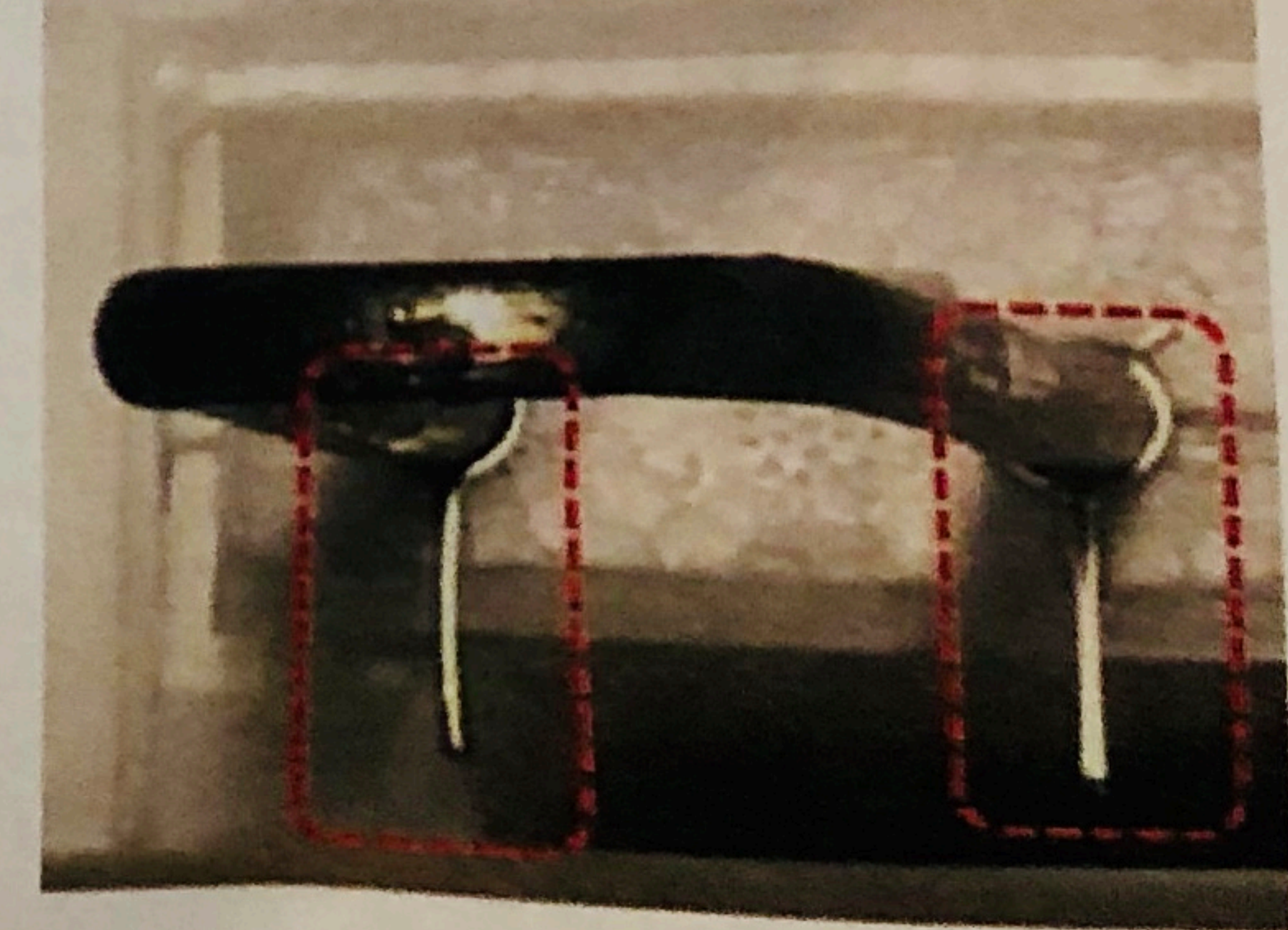
9. Tighten cable tie around drain hose. Cut off excess cable tie.



10. Connect the wire, and then push it to inside.



11. Check final assembled condition.  
- Wire, top of Drain Hose



12. Assemble Bracket and Y-Clip in Ice room.